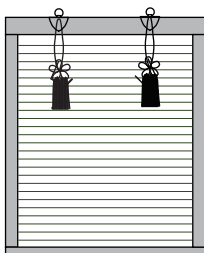
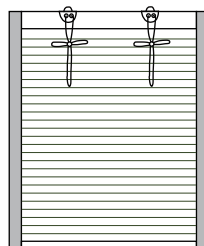




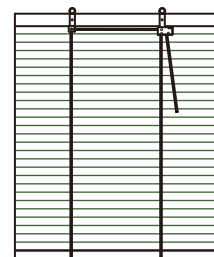
IRO-DORI sudare Free combination sudare



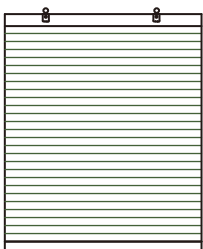
A type / sewing the border on all side



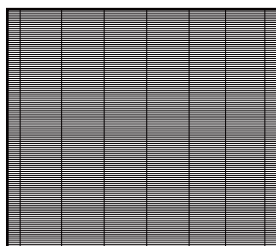
B type / sewing the border on both side



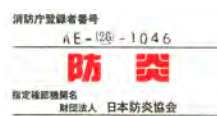
C type / Roll up



E type / without roll up



Ntype /only material



DR-A  
 irodori/matter red  
 material : matter red  
 thread : vermilion  
 maximum production  
 width : 2600mm



DR-C  
 irodori/brown  
 material : brown  
 thread : light brown  
 maximum production  
 width : 2600mm



DR-F  
 irodori/chidori  
 material :  
 orange+natural  
 thread : light brown  
 maximum production  
 width : 2600mm



DR-J  
 irodori/black 1  
 material : black  
 thread : black  
 maximum production  
 width : 2600mm



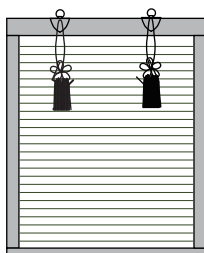
DR-K  
 irodori/black 2  
 material : black  
 thread : red  
 maximum production  
 width : 2600mm



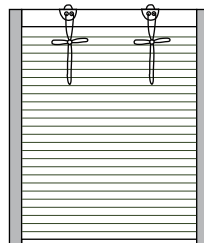
DR-D  
 irodori/orange  
 material : orange  
 thread : light brown  
 maximum production  
 width : 2600mm



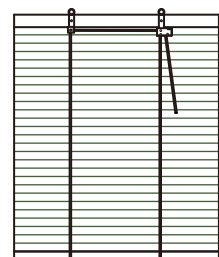
IRO-DORI sudare Free combination sudare



A type / sewing the border on all side



B type / sewing the border on both side



C type / Roll up

DR-E  
 irodori/green  
 material : green  
 thread : drak brown  
 maximum production  
 width : 2600mm



DR-B  
 irodori/yellow  
 material : yellow  
 thread : dark brown  
 maximum production  
 width : 2600mm



DR-H  
 irodori/black 1  
 material : natural  
 thread : vermillion  
 maximum production  
 width : 2600mm



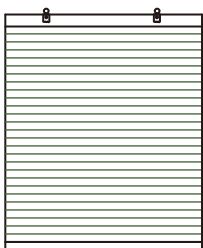
DR-G  
 irodori/blue  
 material : blue  
 thread : black  
 maximum production  
 width : 2600mm



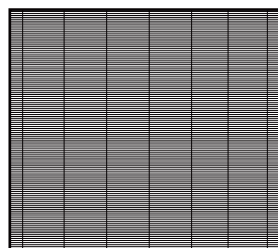
DR-P  
 irodori/smoke  
 material : smoke  
 thread : dark brown  
 maximum production  
 width : 2600mm



DR-M  
 irodori/purple  
 material : purple  
 thread : black  
 maximum production  
 width : 2600mm

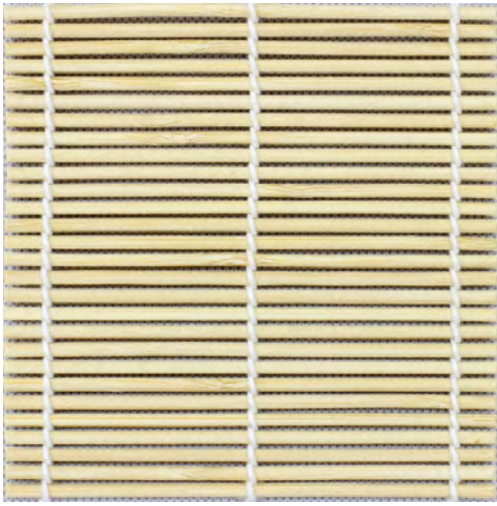


E type / without roll up



Ntype /only material

DR-37  
irodori/3mm dia  
material : natural  
thread : white  
maximum production  
width : 1850mm



DR-42  
irodori/3mm dia  
material : brown  
thread : dark brown  
maximum production  
width : 1850mm



SW-31  
strawberry milk  
material : pink+natural  
thread : white  
maximum production  
width : 2600mm



SW-33  
strawberry jam  
material : pink  
thread : white  
maximum production  
width : 2600mm



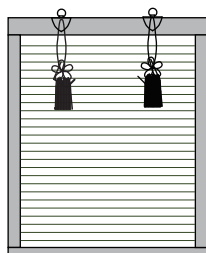
DR-RU  
irodori  
brown+orange  
material : brown+orange  
thread : drak brown  
maximum production  
width : 2600mm



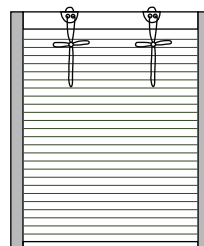
DR-U  
irodori black  
material : black  
thread : white+black  
maximum production  
width : 2600mm



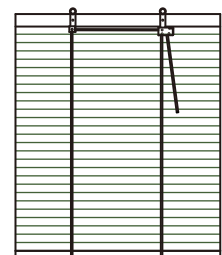
## IRO-DORI sudare Free combination sudare



A type / sewing the border on all side



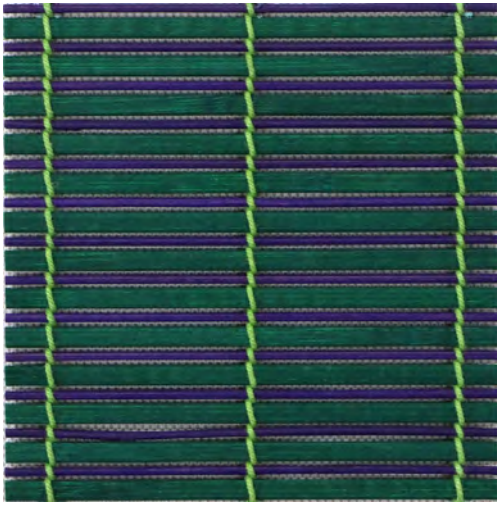
B type / sewing the border on both side



C type / Roll up

DR-RE  
irodori  
green+purple  
material : green+purple  
thread : green

maximum production  
width : 2600mm



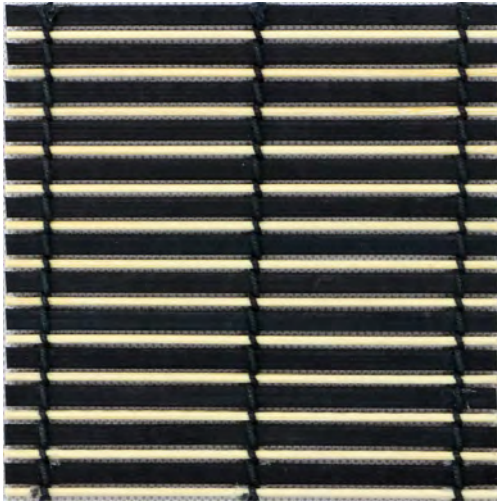
DR-TA  
irodori  
purple+green  
material : purple+green  
thread : purple

maximum production  
width : 2600mm



DR-O  
irodori  
black+natural  
material : black+natural  
thread : black

maximum production  
width : 2600mm



DR-WA  
irodori  
natural+black  
material : natural+black  
thread : black

maximum production  
width : 2600mm



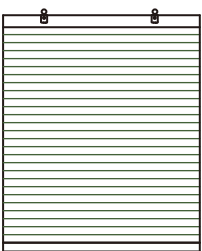
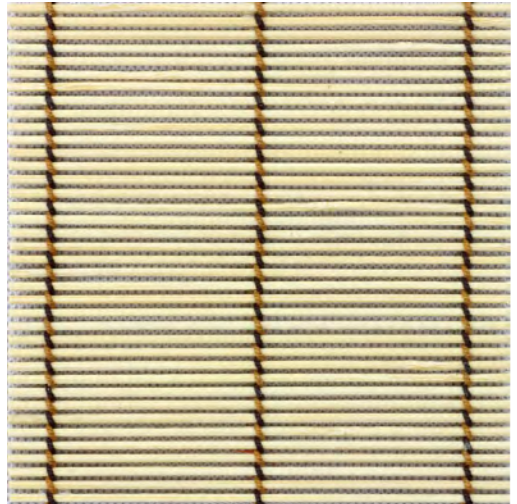
DR-E  
irodori brown  
material : brown  
thread :  
vermilion+light brown

maximum production  
width : 2600mm

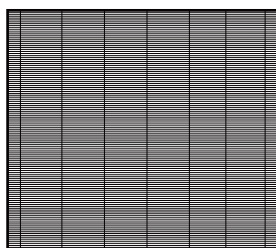


DR-KU  
irodori natural  
material :natural  
thread :  
dark brown+light brown

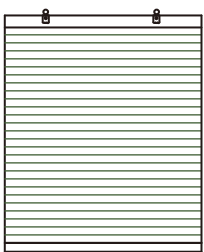
maximum production  
width : 2600mm



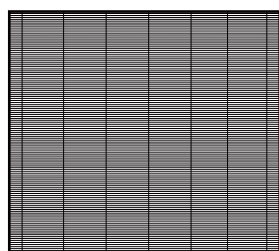
E type / without roll up



Ntype /only material

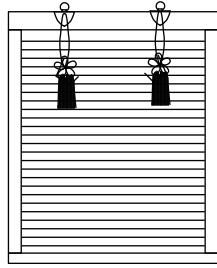


E type / without roll up

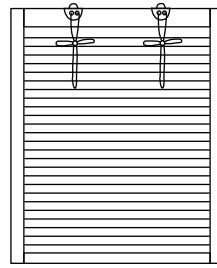


Ntype /only material

# IRO-DORI sudare A type / B type



A type



B type

## Border



D-5 : 美倉どんす緑 / 山吹  
rayon & acetate



D-4 : 華どんす緑 / 緑S  
rayon & acetate



BR-6 : 華どんす / 兎  
rayon & acetate



BR-3 : 美倉どんす / 曲  
rayon & acetate



BR-4 : 美倉どんす / 亀  
rayon & acetate

## flower tassel

tassel length  
H 400mm



TA-23



TA-30



TA-25



TA-26



TA-28



TA-29



TA-34



TA-24



TA-27



TA-31

## cord tassel



tassel length  
H 400mm

CR-31 CR-32 CR-33 CR-34 CR-35 CR-36 CR-37

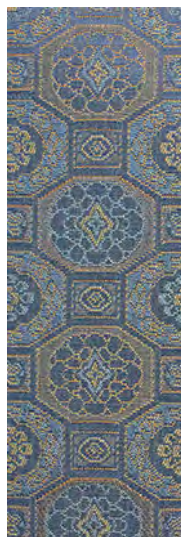
縁 Border



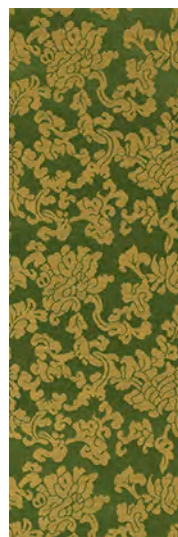
S-1：朱珍縁（丸紋）  
Ⓢ Silk



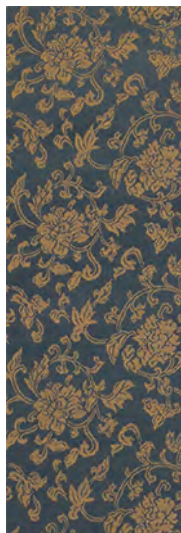
S-2：古代縁（鳳凰）  
Ⓢ Silk



D-1：藍海どんす縁  
Bemberg & cotton



BR-2：華どんす/緑L  
Rayon & Acetate



D-2：華どんす縁/青  
Rayon & Acetate



D-3：華どんす縁/深緑  
Rayon & Acetate



D-4：華どんす縁/緑S  
Rayon & Acetate



D-5：美倉どんす縁/山吹  
Rayon & Acetate



BR-3：美倉どんす/曲  
Rayon & Acetate



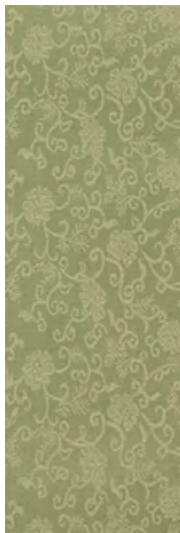
BR-4：美倉どんす/亀  
Rayon & Acetate



BR-5：華どんす/葉青  
Rayon & Acetate



BR-6：華どんす/瓦  
Rayon & Acetate



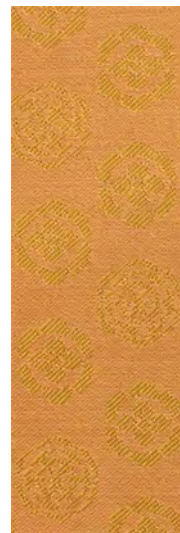
BR-7：華どんす/うす青  
Rayon & Acetate



BR-8：華どんす/紺  
Rayon & Acetate



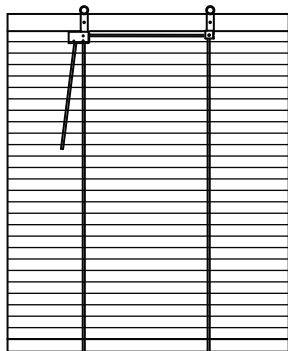
BR-9：華どんす/煌  
Rayon & Acetate



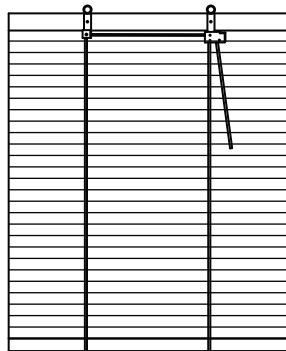
BR-10：華どんす/円  
Rayon & Acetate

# IRO-DORI sudare

C type / E type / N type



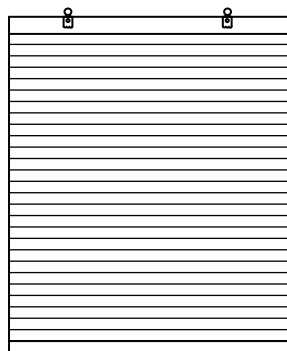
left operation



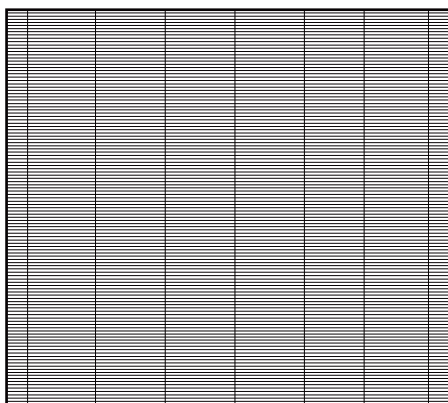
right operation

C type / roll up

(left operation or right operation)



E type / without roll up



N type / only material

Finishing thread



① bond finishing



② tie finishing